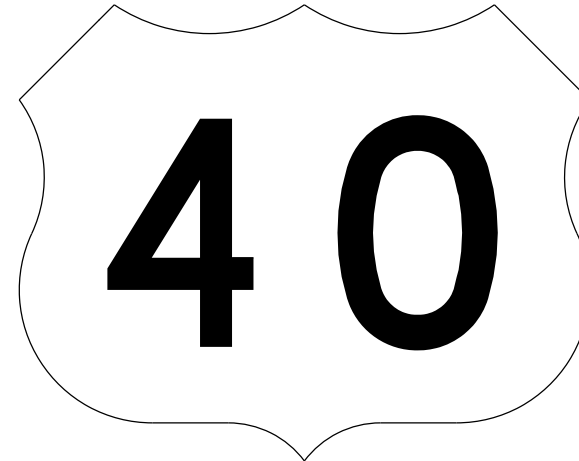




WHITE BACKGROUND WITH BLACK BORDER AND NUMERALS

M1-4(I)



WHITE BACKGROUND WITH BLACK NUMERALS

M1-4(G)

(G) INDICATES SHIELD TO BE USED ON ALL GUIDE SIGNS AND DOES NOT REQUIRE BLACK BORDER

FOR INDEPENDENT USE ONLY

FOR GUIDE SIGN USE

M1-4(I)					
12" NUMERALS		18" NUMERALS		24" NUMERALS	
2 DIGITS	3 DIGITS	2 DIGITS	3 DIGITS	2 DIGITS	3 DIGITS
24" x 24"	30" x 24"	36" x 36"	45" x 36"	48" x 48"	60" x 48"

M1-4(G)					
12" NUMERALS		18" NUMERALS		24" NUMERALS	
2 DIGITS	3 DIGITS	2 DIGITS	3 DIGITS	2 DIGITS	3 DIGITS
24" x 24"	30" x 24"	36" x 36"	45" x 36"	48" x 48"	60" x 48"



M2-1(S)
M2-1(I)



M4-5(I)
M4-5(S)

(I) INDICATES WHITE LEGEND ON BLUE BACKGROUND (INTERSTATE)
(S) INDICATES BLACK LEGEND ON SILVER BACKGROUND (STATE)

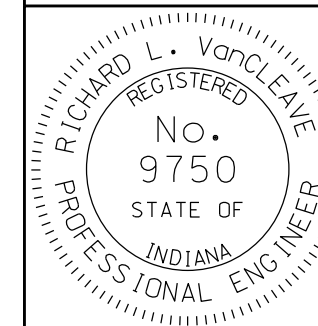
STATE	M2-1(S)	M2-1-(S)	M4-5(S)	M4-5-(S)
INTERSTATE	M2-1(I)	M2-1-(I)	M4-5(I)	M4-5-(I)
SHIELD SIZES	24" x 24" 30" x 24"	36" x 36" 45" x 36"	24" x 24" 30" x 24"	36" x 36" 45" x 36"
CORRESPONDING SIGN SIZE	21" x 15"	21" x 15"	24" x 21"	30" x 15"

INDIANA DEPARTMENT OF TRANSPORTATION

ROUTE MARKER DETAILS

SEPTEMBER 2010

STANDARD DRAWING NO. E 802-SNGS-01



/s/ *Richard L. VanCleave* 09/01/10
DESIGN STANDARDS ENGINEER DATE

/s/ *Mark A. Miller* 09/01/10
CHIEF HIGHWAY ENGINEER DATE

DESIGN STANDARDS ENGINEER

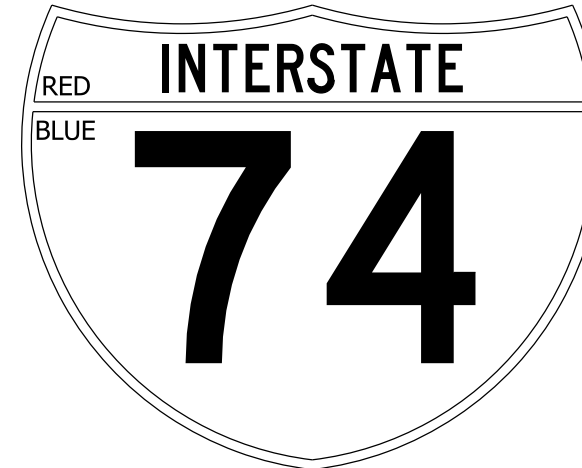


WHITE BACKGROUND WITH BLACK LETTERS, NUMERALS AND BORDER

M1-5

STATE ROUTE MARKER

M1-5					
12" NUMERALS		18" NUMERALS		24" NUMERALS	
2 DIGITS	3 DIGITS	2 DIGITS	3 DIGITS	2 DIGITS	3 DIGITS
24" x 24"	30' x 24"	36" x 36"	45" x 36"	48" x 48"	60" x 48"



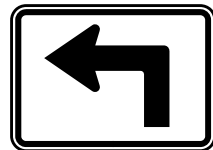
WHITE LETTERS, NUMERALS, AND BORDER

M1-1

INTERSTATE SHIELD

M1-1					
12" NUMERALS		18" NUMERALS		24" NUMERALS	
2 DIGITS	3 DIGITS	2 DIGITS	3 DIGITS	2 DIGITS	3 DIGITS
24" x 24"	30' x 24"	36" x 36"	45" x 36"	48" x 48"	60" x 48"

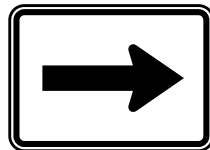
INDIANA DEPARTMENT OF TRANSPORTATION	
ROUTE MARKER DETAILS	
SEPTEMBER 2010	
STANDARD DRAWING NO.	E 802-SNGS-02
	<i>/s/ Richard L. VanCleave</i> 09/01/10 DESIGN STANDARDS ENGINEER DATE
	<i>/s/ Mark A. Miller</i> 09/01/10 CHIEF HIGHWAY ENGINEER DATE
DESIGN STANDARDS ENGINEER	



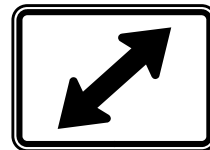
M5-1 (R or L) (I or S)



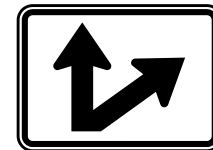
M5-2 (R or L) (I or S)



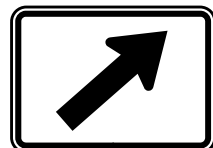
M6-1 (R or L) (I or S)



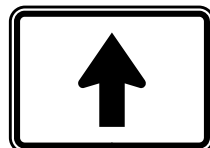
M6-5 (R or L) (I or S)



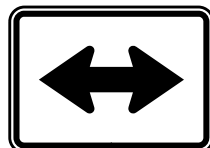
M6-7 (R or L) (I or S)



M6-2 (R or L) (I or S)



M6-3 (I or S)



M6-4 (I or S)



M6-6 (R or L) (I or S)

STATE	M5-1(S) M6-1(S) M6-3(S) M6-5(S) M6-7(S) M5-2(S) M6-2(S) M6-4(S) M6-6(S)			
INTERSTATE	M5-1(I) M6-1(I) M6-3(I) M6-5(I) M6-7(I) M5-2(I) M6-2(I) M6-4(I) M6-6(I)			
SHIELD SIZES	24" x 24" 30" x 24"		36" x 36" 45" x 36"	
CORRESPONDING SIGN SIZE	21" x 15"		21" x 15"	



M3-1 *
(S or I)



M3-2 *
(S or I)



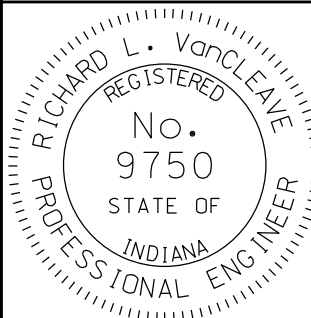
M3-3 *
(S or I)



M3-4 *
(S or I)

* Note: Make 1st letter 10% taller

STATE	M3-1(S) M3-2(S) M3-3(S) M3-4(S)			
INTERSTATE	M3-1(I) M3-2(I) M3-3(I) M3-4(I)			
SHIELD SIZES	24" x 24"	30" x 24"	36" x 36"	45" x 36"
CORRESPONDING SIGN SIZE	24" x 12"	30" x 15"	30" x 15"	30" x 15"

INDIANA DEPARTMENT OF TRANSPORTATION	
ROUTE MARKER DETAILS	
SEPTEMBER 2010	
STANDARD DRAWING NO.	E 802-SNGS-03
	/s/ <i>Richard L. VanCleave</i> 09/01/10 DESIGN STANDARDS ENGINEER DATE
	/s/ <i>Mark A. Miller</i> 09/01/10 CHIEF HIGHWAY ENGINEER DATE
DESIGN STANDARDS ENGINEER	

GENERAL NOTES

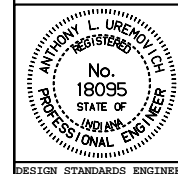
1. All series M(S) "JCT", cardinal directions, "TO", and arrows shall be white background with black legend and border.
2. All series M(I) "JCT", cardinal directions, "TO", and arrows shall be blue background with white legend and border.
3. Numerals sometimes cannot be accommodated within the space available. For this situation, the standard series D numeral may be reduced to series C. As a second choice, use the next smaller height commonly available.
4. For independent use of sheet signs, a nylon and metal washer shall be placed between each bolt head and the face of the metal sign. See Sign Bolt Detail on Std. Dwg. No. E 802-SNGS-07.
5. Visually space numbers about vertical centerline of shield.
6. Wherever white is specified herein as a color, it is understood to include silver-colored reflecting coatings or elements that reflect white light.
7. Fabrication details for the signs shown shall be found in the Standard Highway Signs booklet. Shop drawings will be supplied on all other signs not found in such booklet
8. For hole punch pattern see shop drawings.

INDIANA DEPARTMENT OF TRANSPORTATION

ROUTE MARKER DETAILS

JANUARY 2000

STANDARD DRAWING NO. E 802-SNGS-04



/s/ Anthony L. Uremovich 3-01-95
DESIGN STANDARDS ENGINEER DATE

/s/ Donald W. Lucas 3-01-95
CHIEF HIGHWAY ENGINEER DATE

DESIGN STANDARDS ENGINEER

KEY

CODE	DESCRIPTION
0-1-H	Paint (Black) for use with prismatic reflective sheeting
S-1-H	Reflective sheeting (Yellow) prismatic
S-2-H	Reflective sheeting (Silver) prismatic
S-3-H	Reflective sheeting (Green) prismatic
S-4-H	Reflective sheeting (Blue) prismatic
S-5-H	Reflective sheeting (Silver with reverse screen transparent Red) prismatic
S-6-H	Reflective sheeting (Silver with reverse screen transparent Blue) prismatic
S-7-H	Reflective sheeting (Silver with reverse screen transparent Green) prismatic
S-8-H	Reflective sheeting (Silver with reverse screen transparent Red and Blue) prismatic
S-9-H	Reflective sheeting (Orange) prismatic
S-10-H	Reflective sheeting (Fluorescent Yellow), prismatic
S-11-H	Reflective sheeting (Fluorescent Yellow-Green), prismatic
A	Cut - Out letters which are painted black or as per specifications
B	Copy as per specifications
△	Brown background with prismatic reflective sheeting

SIGN	REMARKS	BACKGROUND	COPY & BORDER
IGD, GD	Directional	S-3-H	B
IGDO, GD	Directional	S-3-H	B
IGI	Information	S-3-H	B
IGS	Services	S-4-H	B
IGS	Services	S-6-H	S-2-H
IGDO, GDO Special - Panel	Warning Panel	S-1-H	A
R1-1	Stop	S-5-H	S-2-H
R1-2	Yield	S-2-H	S-5-H
R1-3, R1-4	4-Way, All-Way	S-5-H	S-2-H
R2-3	Night Speed	0-1-H	S-2-H
R3-1, R3-2, R3-4	No Right, Left, or U Turns	S-2-H	S-5-H, 0-1-H
R5-1	Do Not Enter	S-5-H	S-2-H
R5-1a	Wrong Way	S-5-H	S-2-H
R5-2, R5-6	No Trucks, Bicycles	S-2-H	S-5-H, 0-1-H
R7-1, R7-4, R7-107, R7-201	No Parking (Urban)	S-2-H	S-5-H
R7-2a, R7-107a	No Parking (Urban)	S-2-H	S-5-H, 0-1-H
R7-5, R7-5a, R7-108	Restricted Parking	S-2-H	S-7-H
R7-8	Reserved Parking	S-2-H	S-7-H, S-6-H
R8-1, R8-1a, R8-2, R8-3, R8-3b, R8-3c, R8-8	No Parking (Rural)	S-2-H	S-5-H
R8-3a	No Parking (Rural)	S-2-H	S-5-H, 0-1-H
R9-3a, R9-4a	Pedestrian Signs	S-2-H	S-5-H, 0-1-H
All other regulatory signs		S-2-H	0-1-H
W3-1a, W3-2a	Stop & Yield Ahead	S-1-H	S-2-H, S-5-H, 0-1-H
W3-3	Signal Ahead	S-1-H	S-5-H, S-7-H, 0-1-H
All other warning signs	Except Construction Signs, School Warning Signs, and Signs labeled as "FY"	S-1-H	0-1-H
Warning Signs labeled as "FY"		S-10-H	0-1-H
All School Warning Signs		S-11-H	0-1-H
M1-1	Interstate Shields	S-8-H	S-2-H
M1-2, M1-3	Business Shields	S-7-H	S-2-H
M1-4	U.S. Shields	S-2-H	0-1-H
M1-5	County Shields	S-4-H	S-1-H
M1-6	State Shields	S-2-H	0-1-H
M1-7	National Forest	△	S-2-H

SIGN IDENTIFICATION CODES

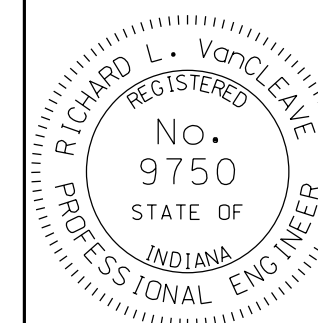
- IGDO Interstate guide directional overhead
- IGD Interstate guide directional
- IGS Interstate guide service and rest area
- IGI Interstate guide information
- GDO Guide directional overhead
- GD Guide directional
- R Regulatory sign
- W Warning, construction, & maint. signs
- M Route markers and aux. markers for assemblies
- D Destination sign
- I Information

INDIANA DEPARTMENT OF TRANSPORTATION

SIGN REFLECTORIZATION SCHEDULE

SEPTEMBER 2012

STANDARD DRAWING NO. E 802-SNGS-05



/s/ Richard L. VanCleave 09/04/12

SUPERVISOR, ROADWAY STANDARDS DATE

/s/ Mark A. Miller 09/04/12

CHIEF ENGINEER DATE

SIGN	REMARKS	BACKGROUND	COPY & BORDER
M2-1 (I), M3-1 (I), M3-2 (I), M3-3 (I), M3-4 (I)	Auxiliary markers	S-6-H	S-2-H
M4-5 (I), M4-7 (I), M5-1 (I), M5-2 (I)	Auxiliary markers	S-6-H	S-2-H
M6-1 Through M6-7	Auxiliary markers	S-6-H	S-2-H
M4-5, M4-6, M4-6a	Auxiliary markers	S-7-H	S-2-H
M4-8, M4-9	Detour marker	S-9-H	O-1-H
all other marker Auxiliaries		S-2-H	O-1-H
D4-1	Parking	S-2-H	S-7-H
D5-5, D5-5a, D9-2, D9-6	Rest area & service	S-6-H	S-2-H
D7-2	Recreation area	△	S-2-H
All other destination signs		S-3-H	S-2-H
I-17, I-18, I-19		S-6-H	S-2-H
I-20, I-21		S-2-H	O-1-H
All other I-Signs		S-7-H	S-2-H
All construction signs		S-9-H	O-1-H
All maintenance signs		S-9-H	O-1-H

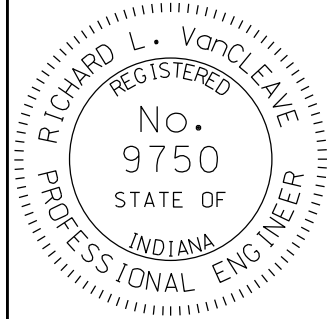
NOTE: Wherever white is specified herein as a color, it is understood to include silver-colored reflecting coatings or elements that reflect white light.

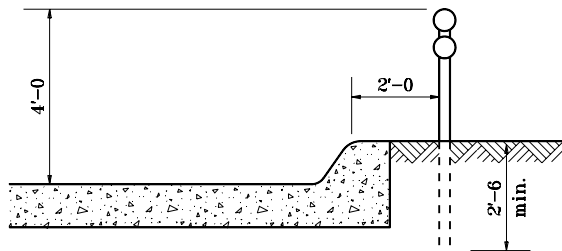
KEY

CODE	DESCRIPTION
0-1-H	Paint (Black) for use with prismatic reflective sheeting
S-1-H	Reflective sheeting (Yellow) prismatic
S-2-H	Reflective sheeting (Silver) prismatic
S-3-H	Reflective sheeting (Green) prismatic
S-4-H	Reflective sheeting (Blue) prismatic
S-5-H	Reflective sheeting (Silver with reverse screen transparent Red) prismatic
S-6-H	Reflective sheeting (Silver with reverse screen transparent Blue) prismatic
S-7-H	Reflective sheeting (Silver with reverse screen transparent Green) prismatic
S-8-H	Reflective sheeting (Silver with reverse screen transparent Red and Blue) prismatic
S-9-H	Reflective sheeting (Orange) prismatic
A	Cut - Out letters which are painted black or as per specifications
B	Copy as per specifications
△	Brown background with prismatic reflective sheeting

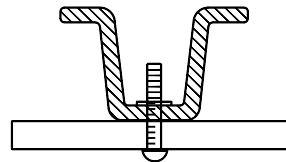
SIGN IDENTIFICATION CODES

IGDO Interstate guide directional overhead
 IGD Interstate guide directional
 IGS Interstate guide service and rest area
 IGI Interstate guide information
 GDO Guide directional overhead
 GD Guide directional
 R Regulatory sign
 W Warning, construction, & maint. signs
 M Route markers and aux. markers for assemblies
 D Destination sign
 I Information

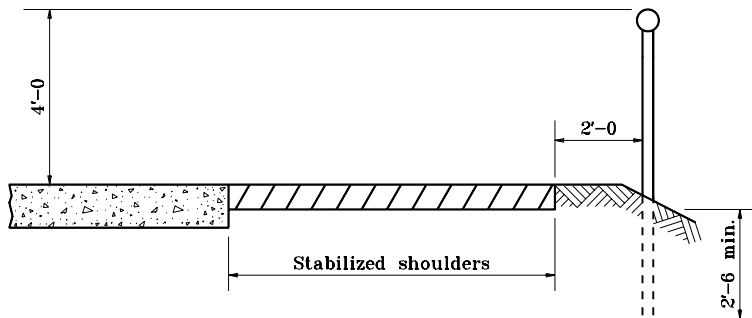
INDIANA DEPARTMENT OF TRANSPORTATION	
SIGN REFLECTORIZATION SCHEDULE	
SEPTEMBER 2010	
STANDARD DRAWING NO.	E 802-SNGS-06
	<i>/s/ Richard L. VanCleave</i> 09/01/10
	DESIGN STANDARDS ENGINEER DATE
	<i>/s/ Mark A. Miller</i> 09/01/10
	CHIEF HIGHWAY ENGINEER DATE
DESIGN STANDARDS ENGINEER	



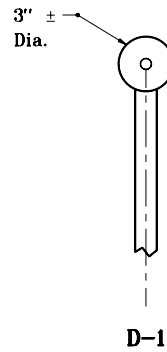
UNMOUNTABLE CURB SECTION



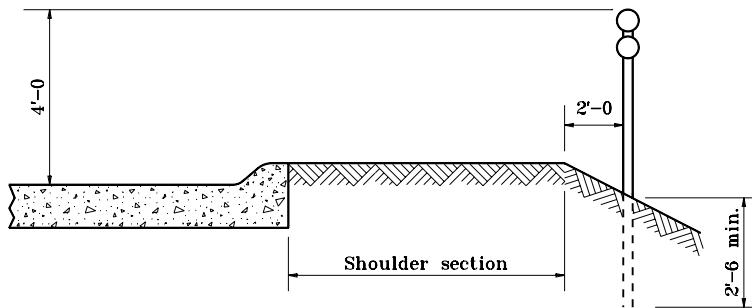
MOUNTING DETAIL



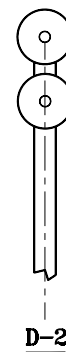
SHOULDER SECTION



D-1



MOUNTABLE CURB SECTION

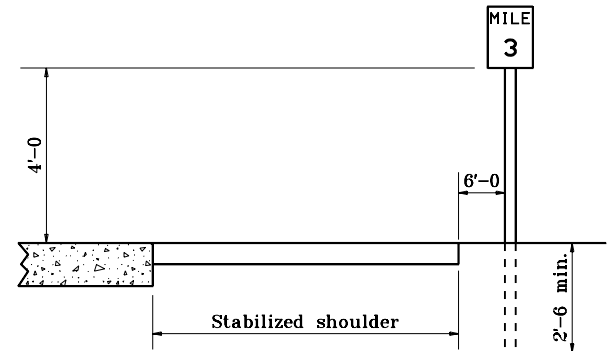


D-2

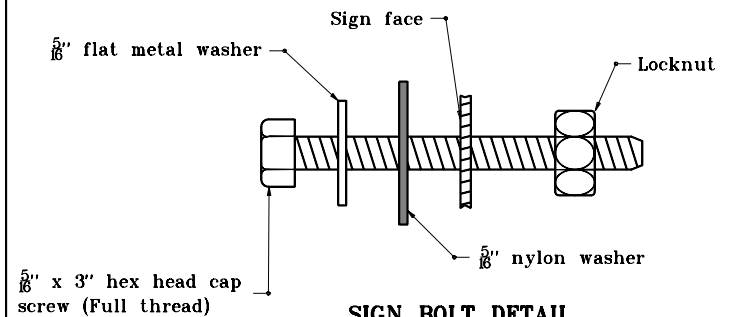
DELINEATOR DETAILS

GENERAL NOTES

1. Post to be type A flange posts.
2. Mileposts shall be installed in accordance with Interstate Sign Manual.



TYPICAL MILE or REFERENCE POST




SIGN BOLT DETAIL

INDIANA DEPARTMENT OF TRANSPORTATION	
MISC. SIGN DETAILS	
MARCH 1995	
STANDARD DRAWING NO. E 802-SNGS-07	
DETAILS PLACED IN THIS FORMAT 11-15-99	
	/s/ Anthony L. Uremovich 11-15-99 DESIGN STANDARDS ENGINEER DATE
	/s/ Firooz Zandi 11-15-99 CHIEF HIGHWAY ENGINEER DATE
DESIGN STANDARDS ENGINEER	ORIGINALLY APPROVED 3-01-95

GENERAL NOTES



1. Nut shall be tightened sufficiently so that the sign is held firmly against the post. However, there shall be no deformation of aluminum sheeting or twisting or damage to the reflective sheeting.
2. Signs shall be fastened to the posts with bolts, metal and nylon washers and locknut.
3. A nylon washer and a metal washer shall be placed between each bolt head and the face of the sign.
4. Flanged channel posts are as specified and as shown on the plans.
5. The sheet signs shall be punched or drilled for mounting such that the vertical hole spacing is in equal increments of millimeters.
6. See Std. Dwg. No. E 802-SNPL-02 for mounting height and lateral locations of signs.
7. Splicing of flanged channel post will not be permitted.
8. Bolt can either be stainless steel or galvanized steel bolt.

INDIANA DEPARTMENT OF TRANSPORTATION	
MISC. SIGN DETAILS	
GENERAL NOTES	
MAY 1999	
STANDARD DRAWING NO. E 802-SNGS-08	
	DETAILS PLACED IN THIS FORMAT 11-15-99
	/s/ Anthony L. Uremovich 11-15-99 DESIGN STANDARDS ENGINEER DATE
	/s/ Firooz Zandi 11-15-99 CHIEF HIGHWAY ENGINEER DATE
	ORIGINALLY APPROVED 5-03-99

MOUNTING WIDTH x HEIGHT ("W x H")	5 ft		6 ft		7 ft		8 ft	
	U CHANNEL	SQUARE POST	U CHANNEL	SQUARE POST	U CHANNEL	SQUARE POST	U CHANNEL	SQUARE POST
12 x 12, 12 x 8, 12 x 9 12 x 12, 12 x 18, 12 x 30	1-A	1-Type 1	1-A	1-Type 1	1-A	1-Type 1	1-A	1-Type 1
12 x 36	1-A		1-A		1-A		1-A	
18 x 6, 18 x 12, 18 x 18	1-A		1-A		1-A		1-A	
18 x 24	1-A		1-A		1-A		1-A	
18 x 30	1-A		1-A		1-A		1-A	
18 x 48	1-A		1-A		1-A		1-A	
24 x 12, 24 x 18, 24 x 24	1-A		1-A		1-A		1-A	
24 x 30	1-A		1-A		1-A		1-A	
24 x 36	1-A		1-A		1-A		1-A	
30 x 18	1-A		1-A		1-A		1-A	
30 x 24	1-A		1-A		1-A		1-A	
30 x 30	1-A		1-A		1-A		1-A	
30 x 36	1-A		1-A		1-A		1-A	
30 x 42	1-B		1-B		1-B		1-B	
30 x 48	1-B		1-B		1-B		1-B	
36 x 12	2-A		2-A		2-A		2-A	
36 x 18	2-A		2-A		2-A		2-A	
36 x 24	2-A		2-A		2-A		2-A	
36 x 36	2-A		2-A		2-A		2-A	
36 x 48	2-A		2-A		2-A		2-A	
42 x 18	2-A		2-A		2-A		2-B	
42 x 24	2-A		2-A		2-A		2-A	
42 x 30	2-A		2-A		2-A		2-A	
42 x 36	2-A		2-A		2-A		2-A	
48 x 16	2-A		2-A		2-A		2-A	
48 x 18	2-A		2-A		2-A		2-A	
48 x 24	2-A		2-A		2-A		2-A	
48 x 30	2-A		2-A		2-A		2-A	
48 x 36	2-A		2-A		2-A		2-A	
48 x 48	2-A		2-B		2-B		2-B	
48 x 60	2-B	2-B	2-B	2-B				
60 x 24	2-A	2-A	2-A	2-A				
60 x 30	2-A	2-A	2-A	2-A				
60 x 36	2-A	2-A	2-B	2-B				
60 x 48	2-B	2-B	2-B	2-B				
72 x 24	2-A	2-A	2-A	2-A				
72 x 36	2-B	2-B	2-B	2-B				
90 x 36	2-B	2-Type 3	2-B	2-Type 3	2-B	2-Type 3	2-B	2-Type 3
120 x 36								

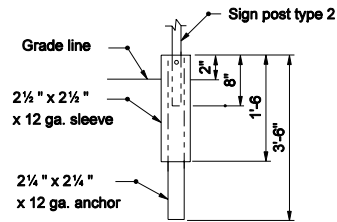
GENERAL NOTES

1. See Standard Sheet E 802-SNGS-10 for square steel sign post installation details.
2. The type 1 post shall be 2 1/4 in. x 2 1/4 in. x 12 ga. wall thickness.
3. The type 2 post shall be 2 in. x 2 in. x 12 ga. wall thickness.
4. The type 3 post shall be 2 1/2 in. x 2 1/2 in. x 12 ga. wall thickness.

INDIANA DEPARTMENT OF TRANSPORTATION	
STEEL SIGN POSTS	
SEPTEMBER 2006	
STANDARD DRAWING NO. E 802-SNGS-09	
	<i>J.s./ Richard L. VanCleave</i> 9-01-06 DESIGN STANDARDS ENGINEER DATE
	<i>J.s./ Richard K. Smutzer</i> 9-01-06 CHIEF HIGHWAY ENGINEER DATE
DESIGN STANDARDS ENGINEER	

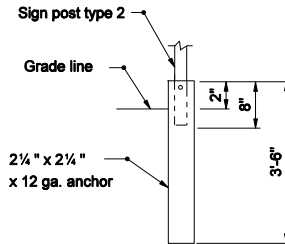
SQUARE POST

12 ga. Thickness



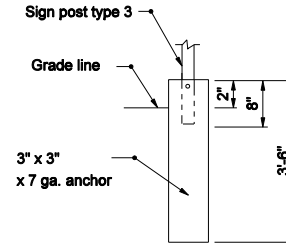
SQUARE POST

12 ga. Thickness



SQUARE POST

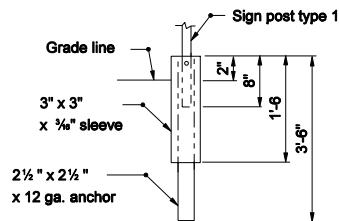
12 ga. Thickness



REINFORCED ANCHOR BASE

SQUARE POST

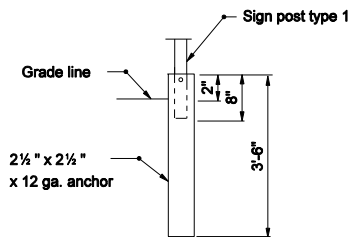
12 ga. Thickness



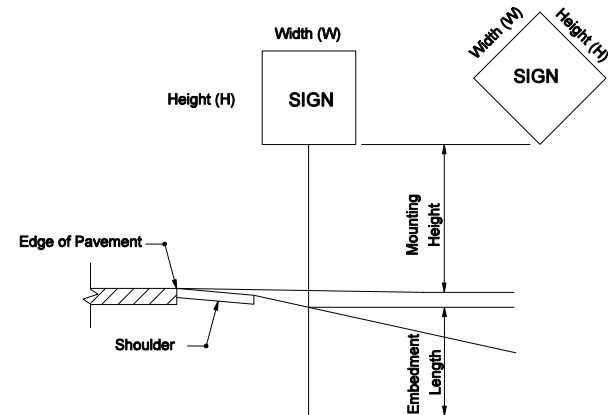
UNREINFORCED ANCHOR BASE

SQUARE POST

12 ga. Thickness



UNREINFORCED ANCHOR BASE



REINFORCED ANCHOR BASE

UNREINFORCED ANCHOR BASE

GENERAL NOTES:

- See Standard Drawing E-802-SNGS-09 for sign size and E802-SNPL-02 for mounting height table.

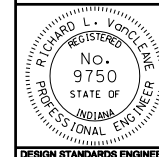
POST	TYPE	WALL THICKNESS	NO. OF POSTS PERMITTED IN 7 ft PATH	EMBEDMENT LENGTH
U-CHANNEL	A, B		1 OR 2	3'-6"
SQUARE	1	12 ga.	1	ANCHOR BASE
	2	12 ga.	1 OR 2	
	3	12 ga.	1	

INDIANA DEPARTMENT OF TRANSPORTATION

STEEL SIGN POSTS

SEPTEMBER 2006

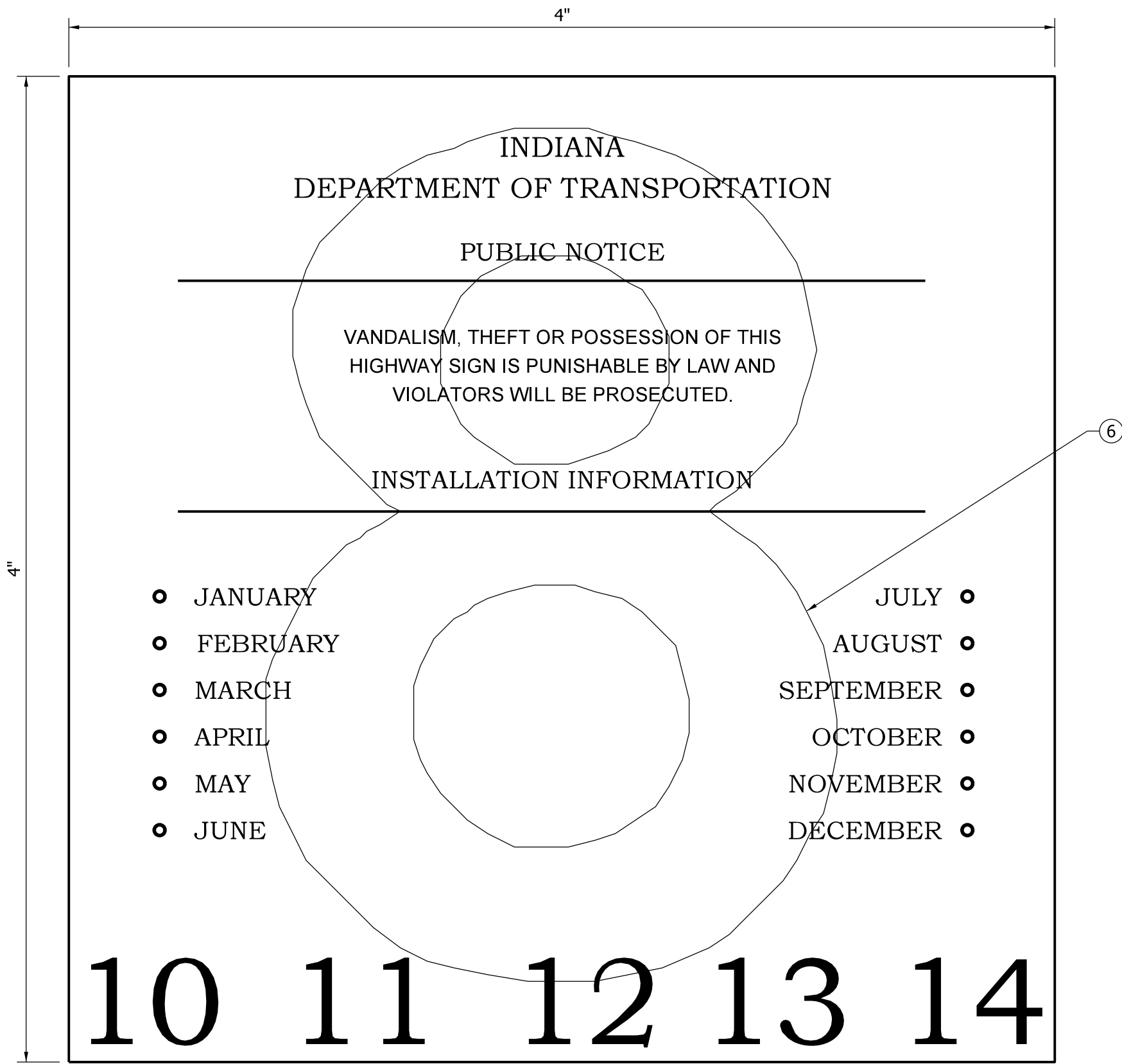
STANDARD DRAWING NO. E 802-SNGS-10



/s/ Richard L. VanCleave 9-01-06
DESIGN STANDARDS ENGINEER DATE

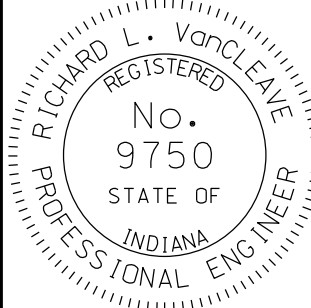
/s/ Richard K. Smutzer 9-01-06
CHIEF HIGHWAY ENGINEER DATE

DESIGN STANDARDS ENGINEER



NOTES:


1. Height of lettering shall be 1/8" to 1/4". The height of the dates along the bottom shall be 1/2".
 2. Copy shall be black on reflectorized white background
 3. The number of dates along the bottom need not be five, and the first date need not be 07. However, the installation date shall be shown.
 4. The month and year of installation shall be punched by a 1/4" minimum diameter hole.
 5. The overlay number to be of colored transparent sheeting to indicate the last digit of the year of installation.
- ⑥ The decade of installation shall be indicated by color of transparent sheeting:
- 2010 - 2019 Red
 - 2020 - 2029 Brown
 - 2030 - 2039 Orange

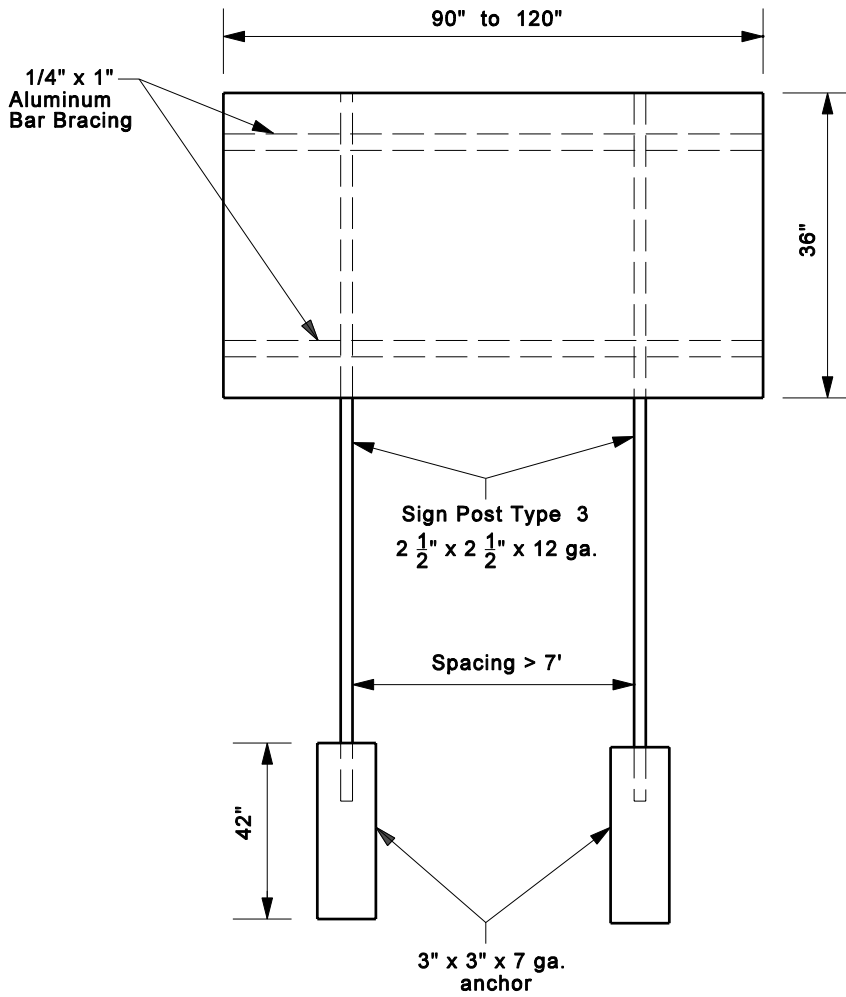
INDIANA DEPARTMENT OF TRANSPORTATION									
SIGN IDENTIFICATION MARKING									
SEPTEMBER 2010									
STANDARD DRAWING NO.	E 802-SNGS-11								
	<table style="width: 100%; border-collapse: collapse;"> <tr> <td style="border-bottom: 1px solid black; padding: 2px;"><i>/s/ Richard L. VanCleave</i></td> <td style="border-bottom: 1px solid black; padding: 2px;">09/01/10</td> </tr> <tr> <td style="padding: 2px;">DESIGN STANDARDS ENGINEER</td> <td style="padding: 2px;">DATE</td> </tr> <tr> <td style="border-bottom: 1px solid black; padding: 2px;"><i>/s/ Mark A. Miller</i></td> <td style="border-bottom: 1px solid black; padding: 2px;">09/01/10</td> </tr> <tr> <td style="padding: 2px;">CHIEF HIGHWAY ENGINEER</td> <td style="padding: 2px;">DATE</td> </tr> </table>	<i>/s/ Richard L. VanCleave</i>	09/01/10	DESIGN STANDARDS ENGINEER	DATE	<i>/s/ Mark A. Miller</i>	09/01/10	CHIEF HIGHWAY ENGINEER	DATE
<i>/s/ Richard L. VanCleave</i>	09/01/10								
DESIGN STANDARDS ENGINEER	DATE								
<i>/s/ Mark A. Miller</i>	09/01/10								
CHIEF HIGHWAY ENGINEER	DATE								
DESIGN STANDARDS ENGINEER									

Wide Flange Post Selection Table
Sign Width (Feet) L

	4	5	6	7	8	9	10	11	12	13	14	15	16	17	18	19	20	21	22	
4																				
5																				
6																				
7																				
8					2 - W6 x 9															
9																				
10												2 - W8 X 13								
11								2 - W8 x 10					2 - W8 x 15							
12																				
13																				
14																	2 - W10 x 19			
15												2 - W8 x 18								
16																				
17																				
18																				
19																				

Sign Height (Feet) W

INDIANA DEPARTMENT OF TRANSPORTATION	
WIDE FLANGE POST SELECTION TABLE	
MARCH 2004	
STANDARD DRAWING NO. E 802-SNGS-12	
	/s/ Richard L. VanCleave 3-01-04 DESIGN STANDARDS ENGINEER DATE
	/s/ Richard K. Smutzer 3-01-04 CHIEF HIGHWAY ENGINEER DATE
DESIGN STANDARDS ENGINEER	



**UNREINFORCED
ANCHOR BASE**

NOTES

1. Maximum Sign Width 120", Height 36".

INDIANA DEPARTMENT OF TRANSPORTATION	
STEEL SIGN POSTS	
SEPTEMBER 2006	
STANDARD DRAWING NO. E 802-SNGS-13	
	/s/ Richard L. VanCleave 9-01-06 DESIGN STANDARDS ENGINEER DATE
	/s/ Richard K. Smutzer 9-01-06 CHIEF HIGHWAY ENGINEER DATE
DESIGN STANDARDS ENGINEER	